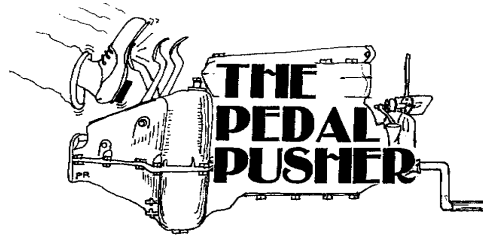




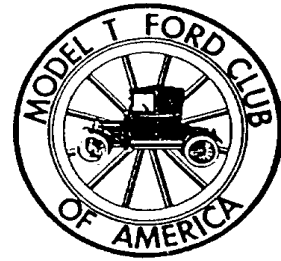
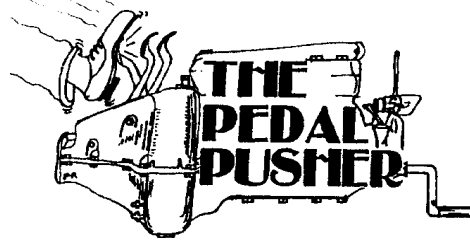
# NEWSLETTER FOR THE REDWOOD EMPIRE MODEL T CLUB



*September 4th — REMTC Meeting*  
*September 20th — Manifold Cooker Tour*

*Watch [remtc.org](http://remtc.org) for flash tours*





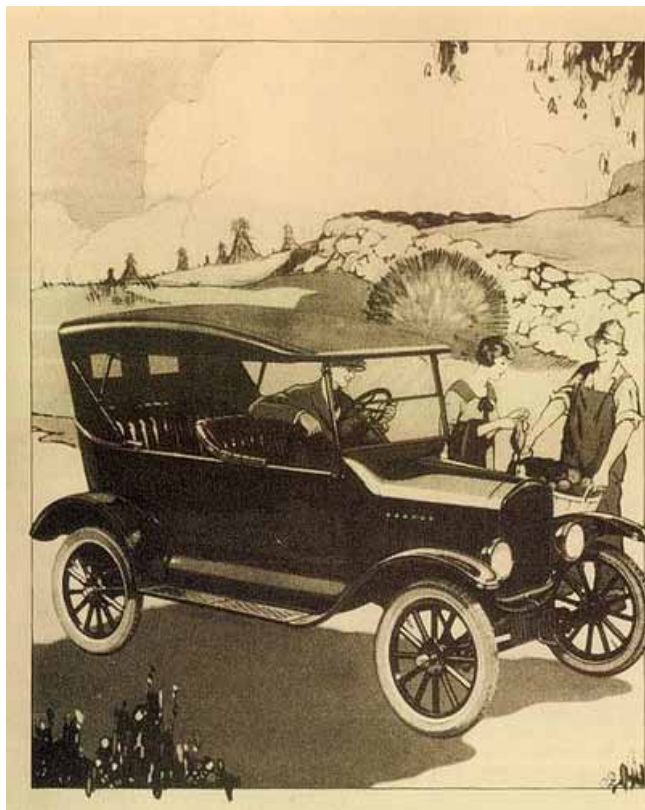
Published Monthly by  
**The Redwood Empire Model T Club (REMTC)**  
**P.O. Box 1058 Forestville, CA 95436**  
 (An Official Non-Profit Chapter Of The Model T Ford Club Of America)

Volume 24, No. 9

\*ESTABLISHED 1990\*

SEPTEMBER 2014

President .....Steve Vining  
 Vice Pres.....Richard Chuck  
 Secretary .....Nanette Chuck  
 Treasurer.....Ted Shimkowski  
 Tour Chairman.....George Jones  
 Newsletter Editor .....Ginny Rich  
 Club Historian.....Jeanne Nelson  
 Sunshine Lady .....Pam Johnson  
 Membership.....Bill Newlin  
 Librarian.....Pete Rich  
 Special Events.....Vince Gregoire  
 Webmaster .....Steve Vining  
 Website.....www.remtc.org



**Ford**  
**Touring Car**  
**\$295**

F. O. S. RETURN  
 Starter and Demountable Wheel 892 Extra

Of all the times of the year when you need a Ford car, that time is NOW!

Wherever you live - in town or country - owning a Ford car helps you to get the most out of life.

Every day without a Ford means lost hours of healthy motoring pleasure.

The Ford gives you unlimited chance to get away into new surroundings every day - a picnic supper or a cool spin in the evening to enjoy the countryside or a visit with friends.

These advantages make for greater enjoyment of life - bring you rest and relaxation at a cost so low that it will surprise you.

By stimulating good health and efficiency, owning a Ford increases your earning power.

Buy your Ford now or start weekly payments on it.



## *REMTC General Meetings for 2014*

The meeting place is Round Table Pizza on Marlow Road. 6:00 pm for dinner and 7:00 pm for meeting. We meet on the first Thursday of each month unless otherwise noted.

## *REMTC Tours for 2014*

**September 20th — Geo. & Linda Jones hosts “Manifold Cooker Tour”**

~~September 28th — Winterhalder Tour — Postponed~~

**October 18th — Friendship Tour — Model T and A's - Details to follow**

**December — Christmas party — Dec. 7th — McGoos in Petaluma**

*Watch [remtc.org](http://remtc.org) for flash tours*

## *Model T's and Parts For Sale*

**For Sale** — 1927 Depot Hack; good running barn find; was once taxi for Southern Pacific. Has Ruckstell rear axle. \$12,500 firm. **Chris Pratt 707-322-4790**

**Wanted; Victor Lamp, Model #2** oil reservoir (font). Has 2 inch opening at the font  
Call Dick at 707-894-1807  
or [rwinterhalder@the.grid.net](mailto:rwinterhalder@the.grid.net)

### *Own a car that was a TV star!*

**For sale: 1916 Model T Touring Car** “Theresa” Originally sold in Oregon, Theresa is looking for her 4th owner. All original parts and paint except for seats and top (replaced in the 80's); Rocky Mountain brakes (installed 1993). Newer tires, tubes and flaps. Brass radiator (services 1999); clear California title. Excellent presentation car. Lovingly garaged except for parades, weddings, cameo appearances on The Young Indiana Jones Chronicles, and jaunts around the block to thrill the neighborhood children. Crank engine S/N 1067347 manufactured Jan. 1916: like many ladies of her age, Theresa may be slow to start but runs great once she's going. Detailed service records back to 1993 included as well as available manuals. \$14,250. or B.O. Phone 415 460 1346

**For Sale:** New 1926-27 Model T Rootlieb stock hood, \$275.00. Contact Jack Mulkey 707-479-8990.

### **Speedster for Sale**

Rocky Mt. Brakes and Warford transmission. 26/27 wire wheels . Asking \$7000 Contact: Dave Haase 707-837-8794



**Redwood Empire Model T Club**  
General Meeting, August 7th, 2014  
Meeting held at Round Table Pizza,  
Marlow Rd., S.R.

President Steve Vining called the meeting to order at 7:00 p.m. and thanked the Konvalinkas for the super overnigher. Steve presented Joe Konvalinka with a gift certificate from REMTC to thank him for all his work and effort on the tour.

**Attendance:**

39 members were in attendance. All board members were present except Jeanne Nelson, Pam Johnson, and Vince Gregoire.

**Secretary's Report:**

The July meeting minutes were read by Nanette Chuck and approved by Judy Konvalinka and seconded by Andy Clary.

**Treasurer's Report:**

The Treasurer's report was read by Ted Shimkowski and approved by (not done)

**Tour Report:**

George is working with Dick Winterhalder on the Cooley Ranch tour for the 28<sup>th</sup> of September.

The 20<sup>th</sup> of September will be the manifold cooker tour and recipes will be available at the next meeting.

The Newlin/Faraudo tour is Saturday August 16<sup>th</sup> and they need your RSVP. Steve Vining volunteered to be the trouble truck driver. Please bring a side dish. Breakfast will be provided at 9 a.m., the tour start time is 9:45 a.m.

Steve asked that, on tours, no one stop for the disabled vehicle when we have a trouble truck which has the fire extinguisher, first aid kit, and the cooler with water to deal with any situation. If you must stop, please pull in front of the disabled vehicle so that the trouble truck has access. You put yourself and others in danger if you stop needlessly. The lead car is in radio contact with the trouble truck.

When traffic prevents the car behind you from making a turn, or they are waiting for a red light, you should slow down or pull over to wait for them. If everyone follows this procedure you will not loose the car in front of you. We need to practice this on our monthly tours.

Ginny volunteered to send a card to the Sunshine lady who is ill.

**Editor's Report:**

Ginny asked for photos of the Konvalinka tour for the newsletter. The webmaster has 45 photos up on the website.

**Old Business:** It is time to think about officers for next year.

Bill suggested providing transportation to senior charter members who are interested in attending local events.

**New Business:** Jeannine suggested that every tour in 2015 be a celebration of REMTC's 25 years. Steve read an article from Chris Smith's column in the Press Democrat about one of our Model T tours.

Jeannine suggested that we reinstate the green and red flags used on tours.

Richard reported that the Ragtime Festival is in Sutter Creek this weekend.

Ginny informed that the Texas T parts supplier is going out of business; it was sold to Echlin.

Ginny said the new members, Margie and Jim Pappakostus, wanted to extend a special thank you to our members for their help and hospitality on the overnigher.

Chris Rich reminded us that before a large tour check your battery, starter, that you can start your car on crank, that your brakes can slow down in reverse, and check your bands.

Burt and Janet were very much appreciated trouble truck drivers on the overnigher tour.

Thank you Ginny Rich for the Apple Walnut Cake.

Meeting adjourned at 7:37 p.m.

Respectfully submitted by , Nanette Chuck, REMTC Secretary



# Lizzie's Page

## Monthly list for Desserts

Dessert should be enough for 35-40 and bring paper plates and plastic folks. If you can't make the meeting, Switch for another date or call a

September	Pam Johnson
October	Cindy Vining
November	Gwen Brown
December	Nanette Chuck

## September Anniversaries

Meyer, Max & Laura	05
Rich, Pete & Ginny	05
DePaoli, Steve & Cece	06
Mazzucchi, Ron & Bobbie	17
Salomon, Robt. & Linda	19
Haase, David & Sherry	25
Randolph, Brent & Carolyn	23
Mulkey, Jack & Gail	23

## September Birthdays

Janet Avakian	02
Chris Burkhardt	08
Earl Holtz	14
Nona Merrill	14
Linda Mori	16
Chuck Kimball	21
Donna Jones	23
Joan Henderson	24
Judy Robinson	27
Robert Taylor	27
Bill Anderson	29
Cavalli, Debbie	28



### IDEALLY ADAPTED FOR A WOMAN'S PERSONAL USE

The woman who has many demands on her time requires a car on which she can always depend for timely use. It must be handled easily; it must assure her of instant and unflinching control; and it must be both good-looking and comfortable—ready for strenuous wear and service. Above all, it must possess the prestige of high success in the motor world. These demands explain why so many thousands of women drive Fords.

TUDOR SEDAN, \$690 - FORDOR SEDAN, \$685 - COUPE, \$625  
(All prices L. O. B. Detroit)



CLOSED CARS

November 1914 Good Housekeeping

# Manifold Cooker Tour

*Saturday, Sept. 20th, 2014*

*Meet at :* *The Jones's.*  
*Place:* *5614 Crystal Drive, Santa Rosa*  
*Time:* *9:00 am*  
*Bring;* *Manifold cooker & food to cook*  
*No Cooker, Bring* *Salad or dessert to share*  
*Beverages:* *Bring your own.*

*We will have lunch at a State Park(vehicle cost \$5),  
picnic tables, water and bathrooms available.*

***R.S.V.P. Please to George & Linda***

***545-0895***

Recipes available  
at the next meeting.

Linda will give more in-  
formation on how to cook on  
the manifold cooker and what  
they learned from trial  
runs.



Manifold cookers are available from many of the parts houses;  
Lang's, Snyder's, Texas T's or Chaffins if you wish to purchase one.  
They run around \$60 to \$70. They are stainless steel now so much  
easier to clean.

# Pasta Tour 2015



16 Model T's arrived at 9:00 am for breakfast treats and eye openers. Mornings have been cool in Sonoma County so our Club jackets have been in good display.

Coffee, pastries and breakfast treats started the day. The gathering place was the ravioli room, Where else would you start a pasta tour?



Looks like Vince found the only covered parking spot. "Now, we wouldn't want to see Essie get dirty ,would we Vince?"

Bill Newlin held the driver's meeting and had lots of tips about how to not get lost. Waiting at a turn for the car behind you works great in local areas but we noticed that in uncharted territory like the Fortuna Tour, a model T would wait for a while but then didn't want to lose the rest of the pack.

Maps and/or directions are always provided so sometimes you have to rely on them to catch up to the tour.

If all else fails, the Trouble Truck will catch up with you. They always follow the last car. Thanks to Steve Vining for driving T. Truck for this tour.



Bill found some roads that the Model T's hadn't been on for a long time or possibly never.

We have North, East West and South county to explore. It's amazing how many day tours we take that are places we haven't seen. Thanks Bill for a nice Sonoma Co. Tour.

Appetite's were peaked for the Pasta Feed!

Thanks to the Faraudo's and the Newlin's for another successful tour.

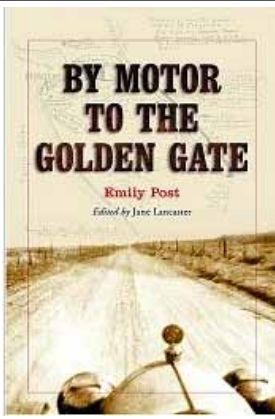
REMTC loves to eat and Con Faraudo's pasta would certainly fill the bill after any tour. Lots of salads, sides and desserts to go along with the Italian theme.

Fran and Con's lovely Victorian home is always a pleasure to visit. You couldn't fine more welcoming folks.

Fern had her now famous "guess how many" game. If you ever wonder what Fern does the night before a tour, she empties box's of food and counts the contents. This time, Pasta!







## **Traveling with Emily Post**

**by Patty Girman**

When we think of Emily Post we think of books on etiquette, not a travel series. Thus I was interested when I found the book “By Motor to the Golden Gate” listed under Automotive

History and written by Emily Post

Emily Post was a divorcee without alimony and raising two sons, one of whom was in college at Harvard at the time. She was making a living as a journalist for “Collier’s Weekly” and had an idea for a travel series. Her approach would be to travel in comfort (remember that she was upper class and accustomed to luxury) and stay and eat at good establishments and then return when “travel became too uncomfortable”. As was the case with many other magazines of the time, “Collier’s Weekly” was dependent on automobile advertisement and this effort might boost sales.

1915 was a very busy travel year in the United States, with many cross-country expeditions. Europe was at war and closed to travel and there were Expositions both at San Diego and San Francisco to lure the American tourist. There was a push to “See America First” that was intertwined with patriotism. Also, William Randolph Hearst was offering a gold medal for the best cross-country stories which he would publish in issues of “Motor Magazine.” Because train travel was already established, there were many hotels and restaurants in place and now roads were under construction with gas stations being added along the way.

Emily’s son, Ned, would be the driver and Emily would be a passenger, taking notes during the entire journey, Ned had a way-too-large, custom-made car shipped over from Europe, just before the war broke out. It had a wheelbase of 144 inches (made those hairpin turns fun) and a center clearance of only eight inches. And it was heavy! They were given advice by a dear friend on which route to take and who remarked when hearing of the car, “Humph! You’d better go in a Ford. But suit yourself. . . “ References about how ideal it would be to be traveling in a Ford were made throughout the book,

This journey began in New York and there were a few hardships along the way - getting stuck in mud, rain storms, car breakdowns. One night there was too much distance between hotels and they slept under the stars, in their fur coats, in the middle of the desert. They thought they would dislike “camping”, but found that at the end of the journey when reminiscing about what was most enjoyable and what they would want to do again, guess what – camping was right at the top of the list.

In her series and later in her book, Emily had detailed hand-drawn maps of the route taken with sites of interest along the way for the traveler. She also noted the best hotels and restaurants and kept a detailed tally of expenses. She also kept a good record of the car expenses for gas, oil, repairs and names of garages. I think one of the main things that I learned from reading this book was how much fun an adventure can be. What a journey this must have been!

*We have several books available in our library. John and Patty Girman have been submitting book reports so our Club member’s have the benefit of book reviews to peak their interests. Thanks to John & Patty . . .ED*

# Please Support our Advertisers



Lloyd Butler

Patternmaker

633 Camelia Street Berkeley, CA 947

Bus.: 510.559.9510 Cell: 510.529.

CA.DRE #01122975  
707.523.3300



SONOMA COUNTY PROPERTIES

7 Generations of Buying and Selling Sonoma County Real Estate

[www.SonomaCountyProperties.com](http://www.SonomaCountyProperties.com)

Residential • Commercial • Investment • Ranches • Land • Vineyards

PERSONALIZED HOMES

REMODELS A SPECIALTY

Haase  
Construction

Lic. No. 329757

DAVID M. HAASE

(707) 837-8794

North Bay Automotive,  
Radiator & Air Conditioning

Complete auto repair

(707) 542-5778

[rroma@att.net](mailto:rroma@att.net)

Mon-Fri 8am-5:30pm - Sat. by appointment

Owners - Ron & Tammi Roma

1239 Cleveland Ave.  
Santa Rosa, CA 95401

Ron: Cell (707) 494-5496  
Tammi: Cell (707) 217-1338



DAN McEACHERN

- Engine & Rebuilding Service for Antique Automobiles
- Model T & A Ford Speed Equipment & Engine Rebuilding

3006 Elmwood Street  
Oakland, CA 94601

By Appt. Only  
Shop: (510) 532-8228  
Home: (510) 521-1963

GARDENERS AID

Family Owned Since 1949

Quality Outdoor Power Equipment

Sales • Service • Parts

Paul J. Henderson, Owner  
1050 Sebastopol Road  
Santa Rosa, CA 95407

Ph (707) 545-7620  
Fx (707) 545-1025



ANTIQUE FORD GARAGE

Model T Hobbyist  
Since 1955

Early Ford  
Repair . Parts . Service

by appointment

Pete Rich  
707-887-8735  
[modelt@sonic.net](mailto:modelt@sonic.net)

5900 Van Keppel Road  
Forestville, CA 95436



Serving Marin  
Napa & Sonoma  
Counties  
Since 1985

Quality Remodels • New Construction • Pools and Spas

Roger Robinson - OWNER

tel (707) 206-9867  
tel (415) 492-3351  
fax (707) 206-9231  
[roger@apachepools.com](mailto:roger@apachepools.com)

PO Box 751392  
Petaluma, CA 94975  
Lic. C53 #883450  
[www.apachepools.com](http://www.apachepools.com)